

THE BRICKLAYER

magazine

www.masonrycontractors.com.au

Official Publication of the Masonry Contractors Australia

VOLUME 3 | APRIL 2022

In this issue...

Annual Awards & Dinner 2022 08

Product Spotlight 12

Become a Member 30



SUPPORT OUR INDUSTRY

SAFE • SOLID • DURABLE
FIRE RESISTANT
LIFETIME GUARANTEE
MINIMAL MAINTENANCE

For Membership details please call
Masonry Contractors Australia
on 02 9296 6661

PLATINUM SPONSORS



GOLD SPONSORS



MASONRYCONTRACTORS.COM.AU





CONTENTS



MASONRY CONTRACTORS AUSTRALIA

President's Report	4
June Breakfast Meeting	5
Board Members	6
Annual Awards & Dinner 2022	8
Excellence in Brick & Block Laying Awards Registration	8
September Breakfast Meeting	9

INDUSTRY NEWS

Tax Deductability of Covid-19 Test Expenses	10
Keep Up-to-Date and Make Informed Choices	11

PRODUCT SPOTLIGHT

Architectural Honed Blocks by Baines Masonry Blocks	12
Why Use the Super Stubbie	14
Achieving Iconic Quay Quarter Vision by Leviat	16
PGH Bricks & Pavers	18



TRAINING & AWARENESS

Brick & Block Careers	20
-----------------------------	----

HEALTH & SAFETY

MBA NSW Asbestos & Silica Awareness Briefing	23
Become a Gatekeeper: Suicide Prevention Gatekeepers Training	25
Hazardous Work Place Dust	26

PRODUCT NEWS

Boral Packaged Cement	28
GB Veneer Arcadia: Masonry Inspired by Nature	28
Slurrytub	28
Complete Lintels Building Supplies	29

MEMBERSHIP PROFILE

Join Now, Become A Member	30
---------------------------------	----





PRESIDENT'S REPORT

April 2022



The world is changing faster than ever before. In the face of this challenge the Construction Industry is virtually under a moral obligation to transform.

Its transformation will most certainly provide transformative effects elsewhere on our wider society; by reducing construction costs, on environmental impacts,

by improving the use of scarce materials or by making buildings more eco-efficient over time; all of which will have positive effects on our economy. With a little more focus on some of our external challenges such as better collaboration, less fragmentation, knowledge transfer and continued support in recruiting a talented workforce our brick and block layers will help achieve this transformation.

Overall, employment levels in the Construction Industry have grown from 652,800 in 2001 to 1,160,700 in 2021, however levels did decline over the 2020-2021 period for obvious factors that are now largely and thankfully behind us. The positive news on the horizon is that projections indicate employment will reach 1,263,900 by 2025. Over the past five years, employment in the industry has increased 7.3%. With greater public education and promotion from TAFE and the ABBTF it is being recognised as a rewarding industry to work in with unlimited opportunities if you are willing to put the effort in and have a go.

Bricks Return with Style in New High-End Buildings

Tired perhaps of the now very familiar glass buildings around the country, developers and architects are becoming more creative with custom-designed brickwork. Masonry is having a resurgence. In all probability it's a symptom of glass tower fatigue, perhaps it can be attributed to a desire for a building material that has more warmth and texture. Or maybe it's the hard pull of nostalgia to the classic brick buildings around the world, from London to New York, Paris and Rome. Around most of the world's cities new construction and

developments are sporting brick facades, often with custom-crafted bricks and in some instances with couture bricks arranged in eye-catching patterns and colours.

40 years ago back in the day when I was laying bricks there were very limited choices. Those (not so) memorable cream or red textures or dry press face bricks, generally in any shade of red, was the material of abundance for affordable housing. The great news is today's architects of high-end projects are reinterpreting brick in terms of its style and size in the design facades. One only has to look at some of the projects completed over the last 5 years to feel proud of what has been achieved. There has definitely been a return to greater thought and attention to detail and interest and quality in the designs over the simple volume driven mindset of more recent times.

The ABBTF Team continues to work towards achieving their goal of finding and filling brick and block laying vacancies and ensuring the demand for bricks and blocks can be met by Apprentices' in training as well as qualified tradespeople. If this demand is not met, it would lead to lengthy construction delays and subsequently impact the supply of bricks and blocks as a viable construction material. ABBTF have reached a 73% growth in supported 1st Year Bricklaying Apprentices since March 2020. ABBTF now currently have over 600 1st Year Apprentices and is supporting over 1,500 Apprentices around Australia.

Masonry Contractors Australia (MCA) and its members are an integral part of the Construction Industry. Our Team of 7 Executives have over 200 years' experience collectively in the Industry and we are always willing to impart this knowledge to our Members and the Industry. We have a common goal to support and contribute to innovative solutions to advance the brick laying and block laying Industries for our Members whether they be a Sole Trader or a Tier 1 Contractor. We cannot thank all of our Members enough for their continued support with which the MCA Team will continue to strive to exceed the expectations of our Members. Thank you.

Brendan Coyle, President



BREAKFAST MEETING 22 JUNE 2022

**NOVOTEL SYDNEY OLYMPIC PARK
FOREST ROOM • 7:30-9:30AM
REGISTRATION FROM 7:15**

Welcome Address: President

Guest Speakers:

Bruce Perry Cement Australia

David Flintoff Slurrytub

Petra Petersen & Beth Smith ABCC:

Security of Payment

COST: \$50 +GST

POTENTIAL NEW MEMBERS ARE INVITED

Register by Wednesday 15 June to tvanbreugel@mbansw.asn.au

SAVE THE DATE



CSIRO Field Support Facility

AMC Architecture was commissioned by CSIRO to deliver a new 1500m² centralised Field Support Facility for field support functions with a separate secured enclosure for vehicle storage and covered washdown bay at its Black Mountain Campus in the ACT. The establishment of the Facility forms a key part of CSIRO's ACT Site Consolidation Project as well as the broader Masterplan for the Black Mountain Campus and provides amenities, storage, vehicle storage and processing facilities for staff undertaking field studies.

Concrete block was specified for a large portion of the facility as a simple yet strong material that fit unpretentiously amongst the mature native landscape, while providing fire resistance. PSG Holdings were engaged as the construction managers for the \$7m project, seeing it through to completion in 8 months.

Adbri Masonry's block range is designed to meet the demands of residential, multi-residential and commercial construction with a solution for every application. All products within the Adbri block range are Australian made masonry, they're practical, durable, and built to stand the test of time.

AdbriMasonryAus adbrimasonry

1300 230 633 | adbrimasonry.com.au | enquiries@adbri.com.au





BOARD MEMBERS

The peak industry association for bricklayers, Masonry Contractors Australia (MCA) is run and operated entirely by volunteers. Our Board Members all have extensive industry experience and are dedicated to assisting and promoting the bricklaying and blocklaying industry in Australia.



PRESIDENT
BRENDAN COYLE
Oldfields

Brendan has more than 30 years experience in the Masonry Industry. He has worked as a bricklayer in Ireland, England, New Zealand and across Australia. With more than 20 years' Senior Management experience, being employed by two Australian major brick manufacturers for approximately 15 of these years. Brendan also has a Masters in Business (MBA).



VICE PRESIDENT & EXECUTIVE OFFICER
LAURA CARR
Construction Manager
Walsos Bricklaying
(NSW) Pty Ltd

Laura arrived in Australia from the UK in July 2005, and after travelling around the country decided to settle in Sydney. She enrolled and completed a Diploma of Business Management and Work Health and Safety (WHS).

Laura attended Australian Technical and Further Education (TAFE) as an International Student, and in 2010 completed a Certificate IV in Building and Construction. She commenced in the Construction Industry as an Estimator for Walsos Bricklaying (NSW) Pty Ltd and now oversees every aspect of the business.



EXECUTIVE MEMBER
TIM MURPHY
Director
FUGEN Holdings Pty Ltd

Tim and his brother Dan established FUGEN (Bricklaying) in 1984, and still operate the business to this day. Tim was a founding member of the MCA, under the leadership of 'Jock' Cameron (and John White). Tim is proud to still be involved with the MCA and the Masonry Industry.



EXECUTIVE MEMBER
CON ZARAFETAS

Executive Director
Conrina Masonry
Pty Ltd

Con Zarafetas, founder of the Conrina Group, has been involved in the Masonry Industry for more than 30 years. His love for the industry manifests in his commitment to the promotion of the positive aspects that masonry delivers, and also through his involvement with the MCA. Con, an experienced Director, demonstrates an ability to grow organisations to be both financially and ethically sustainable, rewarding all stakeholders in the process. Con has a Graduate Diploma of Management from Macquarie University and is currently completing his Master of Business (MBA) at MGSM.



EXECUTIVE MEMBER
JOHN WHITE

Senior Commercial
Business Development
Manager
PGH Bricks & Pavers
NSW

John has been involved with the MCA since 1997, and served as Executive Officer from 2003 to 2013. Primarily from a sales background, John has sold everything relating to the industry, including bricks, blocks, sand, and cements through to wall ties, as well as bricklaying services. He has a basic knowledge of remedial and rectification work. Companies he has worked for include Aalborg, ABBTF, Austral, Boral, Brick & Block, Melcann, Statewide and Westox. John's motivation for his work with the Association is to contribute to the continuance of a trade which has fed and clothed him for over 30 years.



EXECUTIVE MEMBER
SAM FAVETTI

Operations Manager /
Supervisor
Favetti Pty Ltd

Sam Favetti is a bricklayer with over 40 years of experience, he is also a business owner as the Director and Operator of the Favetti Group of Companies. The Favetti Group is involved in commercial and residential construction, and is responsible for some of Sydney's iconic brick buildings. Bricklaying is Sam's daily passion, and keeping the trade strong is his commitment to the industry. An MCA Member who wants to contribute his experience for the betterment of the trade, Sam has a Certificate IV in Building and an Associate Diploma in Construction Management.



EXECUTIVE SECRETARY
TRACEY VAN BREUGEL

Master Builders
Association of NSW
Secretariat to Masonry
Contractors Australia

Tracey has been employed by the Master Builders Association of NSW (MBA NSW) for five years. Tracey is the administrator for three Industry Sectors: Masonry Contractors Australia (MCA), Metal Roofing and Cladding Association of Australia (MRCAA) and Livable Housing Australia (LHA).



Annual Awards & Dinner 2022



FRIDAY 4 NOVEMBER 2022 | 6:30PM
DOLTONE HOUSE | JONES BAY WHARF | PYRMONT
Further details to follow

SAVE THE DATE

Excellence in Brick & Block Laying Awards 2022

Entries of Projects from 2020, 2021 and 2022 will be accepted.

All entries are to be accompanied by no more than 15 high resolution (minimum 300dpi and no smaller than A4) photographs of the Project. Included in the 15 photographs must be 3 of the overall Project. Alternatively, large files may be sent via OneDrive or saved to a USB memory stick and:

Mailed to:

Masonry Contractors Australia
Attention: Tracey Van Breugel
"MCA Brick & Block Laying Awards 2022"
Private Bag 9
BROADWAY NSW 2007

Or delivered to:

Attention: Tracey Van Breugel
Ground Floor, 52 Parramatta Road
FOREST LODGE NSW 2037

Or emailed to:

tvanbreugel@mbansw.asn.au

**Excellence in Brick &
Block Laying Awards
2022 Entry Form
GO TO FORM**

ENTRIES CLOSE: Thursday 15 September 2022



SEPTEMBER

BREAKFAST MEETING 14 SEPTEMBER 2022

**NOVOTEL SYDNEY OLYMPIC PARK
FOREST ROOM**

**7:30-9:30AM
REGISTRATION FROM 7:15AM**

Welcome Address: President

Guest Speakers:

Brian Seidler

MBA NSW Executive Director – Industry Update

COST: \$50 +GST

POTENTIAL NEW MEMBERS ARE INVITED

Register by Wednesday 7 September to tvanbreugel@mbansw.asn.au



located at

**40 EDDIE RD
MINCHINBURY**

and

**9 DYER CRES
WEST GOSFORD**

1300 884 363

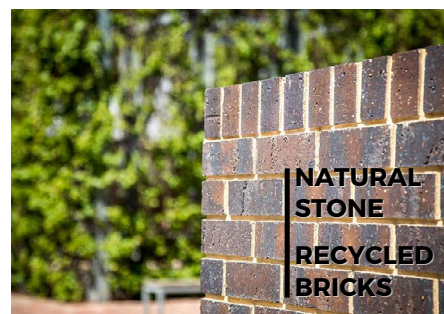
WWW.MDBRICK.COM.AU



**BRICKS
BLOCKS
PAVERS**



**RETAINING
WALLS
BREEZE
BLOCKS**



**NATURAL
STONE
RECYCLED
BRICKS**





UPDATES



Australian Government
Australian Taxation Office

Tax Deductibility of Covid-19 Test Expenses

The Morrison Government is taking action to ensure that COVID-19 tests (including Polymerase Chain Reaction and Rapid Antigen Tests) are tax deductible for hard-working Australians, and exempt from fringe benefit tax for businesses, where they are purchased for work-related purposes. To remove any doubt, the Government will introduce legislation to make clear that work-related COVID-19 test expenses incurred by

individuals will be tax deductible. This applies both when an individual is required to attend the workplace or has the option to work remotely. By introducing this legislation, the Government will also ensure that fringe benefit tax will not be incurred by employers if they provide COVID-19 testing to their employees for work-related purposes. This change will take effect from the beginning of the 2021-22 tax year and will be in place

permanently. This action recognises that COVID-19 tests are an important tool for mitigating transmission risks and absences from the workplace. The Morrison Government has acted swiftly throughout the pandemic to provide Australians and small businesses with clarity and certainty, and continues to do so as they transition back to their workplaces.

For more information, click [here](#).

Boral Cement **Blue Circle**® packaged products

BORAL™

Boral Cement **Blue Circle**® packaged products



Keep Up-to-Date and Make Informed Choices

We encourage you to rely on reputable sources of information to help you make informed choices and stay up to date on the latest information about COVID-19 vaccines.

You can find accurate, evidence-based answers to questions or misinformation about COVID-19 vaccines on the [Department of Health website](#), which is also available in [63 languages](#).

There is currently a misconception that if you've had COVID-19 'you can't get it again.' This is not correct, you still need to get a booster to provide the best protection.

In addition, to be considered 'up to date' with your COVID-19 vaccination status,

the Australian Technical Advisory Group on Immunisation (ATAGI) [recommends](#) everyone aged 16 years and older receive a booster dose three months after their primary course (doses 1 and 2) to maintain the best protection. We encourage everyone to come forward to get their COVID-19 vaccinations, including boosters, as soon as possible to help build protection against infection, severe illness and death from COVID-19, and to maintain your 'up to date' status.

To support the large-scale vaccination of Australians in a range of employment and community settings, the Department of Health has established a panel of immunisation providers.

Currently there are 80 providers listed on the panel. Members may wish to engage the services of a vaccine provider to deliver an on-site workplace vaccination program. The panel of immunisation providers can be accessed at: [Vaccine Administration Partners Program Panel | Australian Government Department of Health](#).

Further advice on the vaccine rollout, information on the booster program, where to get vaccinated and communications resources to assist with messaging to employees and the broader community is available at: [COVID-19 vaccines | Australian Government Department of Health](#).

TRADIES CHOOSE THE CEMENT MADE RIGHT HERE

- ✓ Proudly manufactured right here in Australia since 1890
- ✓ Conforms to Australian Standards (AS3972)
- ✓ Tested for Australian conditions
- ✓ High quality ingredients ensure consistent performance

[cementaustralia.com.au](#)

BUILD CEMENT
Mix with sand for mortar.
Mix with sand & aggregate for concrete.
Blended cement for a more workable mix.
Conforms to AS3972 Type GB, & Type SR Cement Specification.

GENERAL PURPOSE CEMENT
Premium General Purpose cement
Blends with raw materials to suit your project
Conforms to AS3972 Type GP

CEMENT AUSTRALIA
MADE Right Here
plus paving & general building uses

Certified System
Quality
ISO 9001
MANUFACTURING

MADE Right Here

CEMENT AUSTRALIA



ARCHITECTURAL HONED BLOCKS

by Baines Masonry Blocks

Architectural Masonry is the evolution of standard grey concrete masonry blocks into a diverse range of aesthetically appealing concrete masonry blocks. Baines Masonry's range of Architecturally designed Hone Finished Blocks are strikingly unique with a smooth texture highlighted by vivid stone flecks presented in a durable and robust masonry unit with uncompromised functional value.

Honed Blocks are the natural choice when you're seeking distinctive highly finished walls that have been designed with a careful eye to detail. The masonry block undergoes a robust process of refinement utilising innovative diamond impregnated cutting wheels, primarily to alter the geometric form and create an amazing face finish.

Their design and composition make them a flexible design choice perfect for the modern or traditional designer. Their simplicity means they can be used as the primary wall block, or in conjunction with other masonry materials as a feature. Aggregates can either be chosen to contrast or not, with the products matrix colour.

Our award-winning honed blocks have proven to be at the forefront of architectural design, and as such have become the choice of designers and architects looking for structural integrity, quality, and refinement. Such awards include:

- 2019 Excellence in Brick and Block Award – Face Blockwork Covenant Christian School Belrose
- 2018 Excellence in Brick and Block Award - Commercial Public Building Blockwork – Pavilion Inglis Hotel and Riverside Stables Warwick Farm
- 2018 Excellence in Brick and Block Award - Face Block Work – Pavilion Inglis Hotel and Riverside Stables Warwick Farm

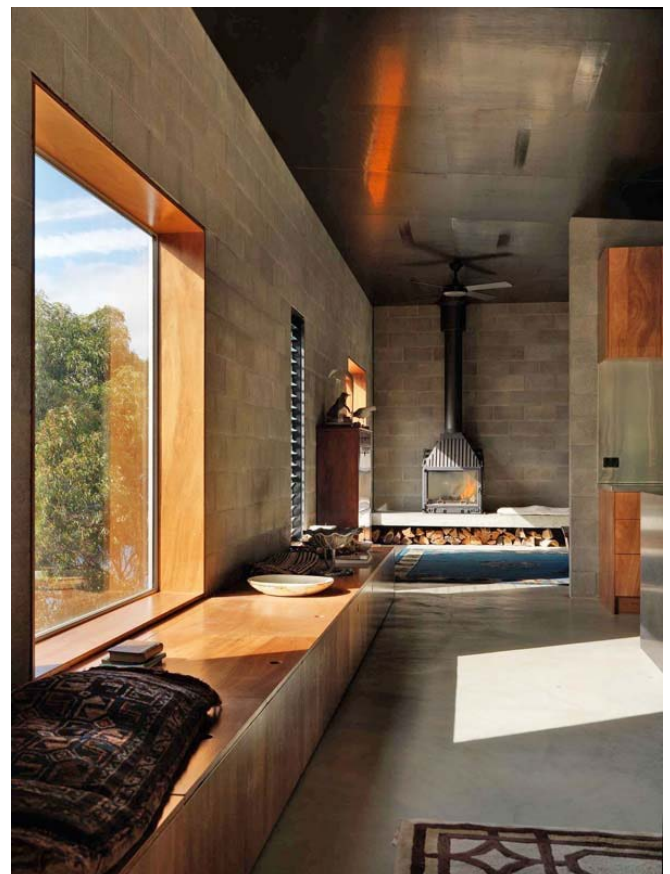
- 2016 Excellence in Brick and Block Award – Single Dwelling Residential – Medium Density Blockwork – Young St, Coledale

The range is available in 90mm, 140mm, 190mm and 290mm wide

blocks, made to order specifically for each individual project. This means blocks are produced and sourced from the one batch, focusing on 'Quality First' with consistency in quality and colour each time. The eight-colour palette includes Appin Stone, Charcoal, Oakdale, Penrose, Bush Rock, Opal White, Basalt and Natural Grey.

Try our online Masonry Designer Software to design your next project! Create distinction in your design by incorporating textures and different finishes such as our





honed, split face and smooth coloured blocks. Access our online Masonry Design Software at <https://www.bainesmasonry.com.au/bainesmasonry-app/>

For more information, please visit our website at www.bainesmasonry.com.au, or call our office on 02 4631 1383.



WHY USE THE SUPER STUBBIE

THE ULTIMATE FACE FIX TIE?

Super Stubbie ties are patented face fix masonry ties that have been designed to make the installation of face fix ties much easier on both timber and metal frames. Here are some of the many benefits of using them and why they are the ultimate face fix ties.

Designed by a bricklayer for the bricklayer

The Super Stubbie tie was designed by an experienced bricklayer and builder to revolutionise the way brickwork was being installed and make this process safer, quicker and easier. Due to the need to make this process safer the idea was formed to have a screw set in the tie.

Savings

The 50 per cent time saving factor on the install of face fix ties allows means that houses can be built quicker. The results are that more houses can be built in the same amount of time and the cost of labour on the houses will be reduced.

Ultimate practicality

Using Super Stubbie ties enables both the builder and bricklayer to install a "two in one" product that is effective and easy to use as it is the face fix tie and screw. Having this tie on the worksite ends the need for having to find or supply a screw as an extra item for the face fix tie to work.

The Super Stubbie tie comes with the correct screw for the precise application, it being a self-tapping screw for a metal frame or a timber screw for a timber frame.

Environmentally friendly

Reduces waste onsite by having a sealed carton of ties that can be easily be reused.

There is less chance of the box being damaged by rain or onsite activities like washing cavities - therefore the leftover product will not be left onsite. The larger cartons also allow for less waste and handling onsite.

Safety

The Super Stubbie tie has been designed so that when the screw has applied pressure it does not catch the side of the hole, which stops it from spinning. Due to this, hand injuries are less likely to occur. When using on a steel frame the way the Super Stubbie tie is designed it allows the screw to have a better stability on install.

Australian Standards

This ultimate face fix tie has been proudly tested to the latest Australian standards for both R2 (light duty) and R4 (medium duty) ratings at the University of Newcastle.

Testing has proven that this face fix tie can be confidently used in the residential industry as it fully complies with the 2020 standard. Because of this testing, we have been able to provide engineering advice on how our product satisfies the install against other products on the market that do not comply.

Regarding stainless steel being used in a steel frame application, we can almost guarantee that our product will avoid the galvanic process that occurs between dissimilar materials being used.

By using the Super Stubbie tie you will benefit from 21st century building industry innovation. Without a doubt Super Stubbie ties make this component of building a house much easier and more efficient.

For more information call 0436 000 189, email sales@superstubbie.com.au or visit www.superstubbie.com.au.



Count on our support

At Leviat, we design and manufacture bespoke stainless steel fixing systems for the support and restraint of brickwork.

- ✓ Recognised and trusted worldwide
- ✓ ISO 9001 accredited
- ✓ Dedicated sales and technical support
- ✓ Design and scheduling service
- ✓ Installation guidance

Ancon® Masonry Support Systems



© Arthur Vay at Sydney Site Photography



Leviat

Tel: 1300 304 320 | Ancon.com.au | Leviat.com

Imagine. Model. Make.

Leviat
A CRH COMPANY



ACHIEVING ICONIC QUAY QUARTER VISION

Bespoke Ancon masonry fixings and restraints, designed and manufactured by world leading construction support specialist, Leviat, have brought to life the shared visions of three leading architects at Sydney's new Quay Quarter development.

At the heart of the multi-billion dollar revamp of Sydney's Circular Quay, three new, iconic buildings are helping to create a dynamic urban village in the shadow of the City's world-famous Opera House.

Individually designed by renowned Australian architects, Studio Bright, Silvester Fuller and SJB, working in collaboration they provide a mixture of high quality residential and commercial spaces, woven together by a network of connecting lanes that create a public arcade complete with boutique retail spaces and eateries.

Whilst each of the three buildings, 8 Loftus St, 18 Loftus St and 15 Young St, portrays a unique style and scale, they are united by the architects' choice of dynamic brickwork façades, helping them sit comfortably alongside nearby historical masonry.

Supported from the buildings' concrete frames, the dramatic façades feature a mix of straight and curved brickwork, punctured by window openings at different levels and complex brick soffit details of varying depth and projection, which called for specialist expertise and innovative fixing solutions.

As our Ancon Support & Restraint Systems are generally

purpose-designed to suit individual applications, we worked closely with specialist masonry contractor, Favetti, to develop a full range of solutions.

This included a bespoke hanging system based on standard Ancon MDC Masonry Support with welded Ancon 36/8 Channel and ZP36 Soffit Ties – a special T-plate detail to retain the exposed window head bricks was developed jointly by Favetti and Leviat offering greater stability and faster, easier installation.

A key feature of the main façade at 18 Loftus St, the 'peel' effect brickwork, created using curved brick with exposed brick soffit, presented a particular challenge. Leviat designers, however, worked closely with Favetti and steel specialist WFJ Engineering to develop a steel-based sub-structure, which was used in combination with our system to provide the necessary support.

Leviat's comprehensive package of solutions for the three buildings included 2150 metres of Ancon MDC Masonry Support; 670 lengths of Ancon AMR Ladder-Type Bed Joint Reinforcement for strengthening masonry sections; 7000 Ancon ZP36 Soffit Ties and over 39,000 Wall Ties of various types, as well as 200 T-lintels with channel and tie and



Ancon radius angle for the curved 'window peel' feature at 8 Loftus St.

"This was a demanding project involving complex detailing and solutions requiring close cooperation and consultation between all parties throughout", said Robert Tannous, Project Manager at Favetti.

"Leviat's expertise in designing and manufacturing bespoke solutions, as well as their high level of technical support throughout, meant we were able to progress quickly and effectively, delivering the most suitable and cost-effective solutions at every stage. They also maintained close contact with Main Contractor, Richard Crookes, giving them peace of mind."

Right: Curved 'Window Peel' Feature at 8 Loftus St

Below: Quay Quarter Lanes, Sydney

Credit: Arthur Vay at Sydney Site Photography





PGH Bricks & Pavers

The intricate sawtooth brickwork on this adaptive reuse design provides for a highly dynamic and continually evolving pattern of shadows.

Located adjacent to a row of listed buildings within a Heritage Conservation Area, this c1891 late Victorian terrace was refurbished and restored as a commercial HQ in the financial industry.

Deliberately singular and distinctly contemporary, the articulated brickwork and steel framed addition complements the materiality of the original building. Its curved form, height and fenestration mediate the change of scale on the street and ensure privacy for the adjoining neighbours.

The work was laid by Nathan Gonzales of NDG Bricklaying in Sydney, a true artisan in the craft of masonry construction with a keen eye to detail and a patient dedication to planning. A true replication of architect's



Metric Credit Partners Project – 2 Ridge Street, North Sydney

vision transformed into the third dimension through a time travelled disciplined tradesman.



THE MUTHA JACK

The Toughest Jack on the Market – 3000kg Lifting Capacity

- Reinforced Tines
- Interchangeable Single or Dual Load Rollers
- German Hydraulics and Seals
- Galvanized Housing, Sturdy Construction with Hard Chromium Plated Piston and Overload Protection
- One Valve Cartridge as a Single Item, instead of many individual parts, Ensuring Easy Service
- Steel Guide Wheels

BRICKMART

(AUSTRALIA) PTY LTD

Telephone
02 9939 5000



www.brickmart.com.au

Come home to Austral Bricks

Enduring style. Energy saving efficiency.
Everlasting strength in all conditions. It's easy
to see why brick outlasts all other materials.
Life is better with **Austral Bricks**.

UNBEATABLE WARRANTY

100 YEAR

PRODUCT WARRANTY

We've Launched
100 New Products!

LEARN MORE AT

australbricks.com.au

A BRAND OF

BRICKWORKS



BRICK AND BLOCK CAREERS

Formerly known as Australian Brick & Blocklaying Training Foundation.

What has changed? New philosophy!

We are excited to introduce our new brand name - Brick and Block Careers. Our new name more closely reflects the business services that we deliver and the difference we want to make in promoting the career pathways available in the building and construction industry.

With a new name, new look and new direction, our vision is to fulfil the career aspirations of young Australians and job seekers, by providing employment opportunities in brick and blocklaying.

This is achieved by providing support services and resources for both apprentices and employers, as well as educating students, teachers, career advisors and parents about the different career path options and the opportunities that exist with a Certificate III Brick/Blocklaying qualification.



Our new name is bright, bold, and clear!

Brick and Block Careers will continue to play a critical role in supporting and strengthening the brick and blocklaying industry in Australia by boosting apprenticeship and ensuring there is a skills pipeline to meet the future needs of employers in the building and construction industry.

It is important that our business model remains agile and flexible in an ever-changing environment. We are now more aligned as an organisation - our values, our vision and our mission, our ways of working and the value we offer to the bricklaying industry.

For more info, visit our website - brickandblockcareers.org.au



Background



'Australian Brick & Blocklaying Training Foundation' was founded in 2005, and although the brand has been around for almost two decades, it needed to forge a new relationship with our target audience and key influencers.

For several years, our company name Australian Brick & Blocklaying Training Foundation (ABBTF) caused confusion, was hard to remember and did not convey the correct message. We were often mistaken as a Registered Training Organisation or a Group Training Organisation when dealing with our key stakeholders. Even our trading name 'Become a Bricklayer' was limiting and did not reflect the full suite of our services.

Consequently, we commenced a rebranding exercise last year with a focus on clarity in the name. Through a wide-ranging process of consultation with the industry and our key stakeholders, we recognised that it was time for us to refresh our external image and contemporise our brand and communications.

Michael Morrissey – CEO – Brick & Block Careers

WE MAKE BRICKLAYING EASIER!

By using the SuperStubbie Tie you are allowing yourself the opportunity to become a true member of the 21st century building industry.

CONTACT US TODAY!

0436 000 189
sales@superstubbie.com.au
www.superstubbie.com.au



BRICKANDBLOCKCAREERS.ORG.AU

CREATE IT
BUILD IT





ASBESTOS & SILICA

Awareness Briefing



Background

Uncontrolled cutting, grinding or drilling of products or materials containing crystalline silica can generate hazardous levels of airborne dust. Breathing in this dust, usually over several years, leads to serious and fatal lung disease such as silicosis.

Course Aims

Silicosis can kill, but exposure to silica dust is preventable. SafeWork NSW is spreading this message by educating workers and the public about the risks of exposure.

Course Topics

- Eliminate or Substitute the Risk
- Isolate the Hazard
- Engineering Controls
- Administrative Controls
- Respiratory Protective Equipment (RPE)

Who Should Attend

Anyone who works with manufactured stone, concrete, bricks or rock.

Next Courses to be held

MBA Offices

52 Parramatta Rd, Forest Lodge

Parking is not available at MBA Offices Sydney for the duration of the Course.

Course Cost

Masonry Contractors Australia (MCA)
Company Rate:

Up to 10 employees - \$500 +GST

Up to 15 employees - \$750 +GST

Up to 20 employees - \$1,000 +GST

Dates & Times

Please indicate your preference on the Registration Form.

Registration Details

1 Download and complete form

2 Email completed form to the MBA Safety Department using the details at the bottom of the form.

3 A confirmation email will be sent to you with full details.

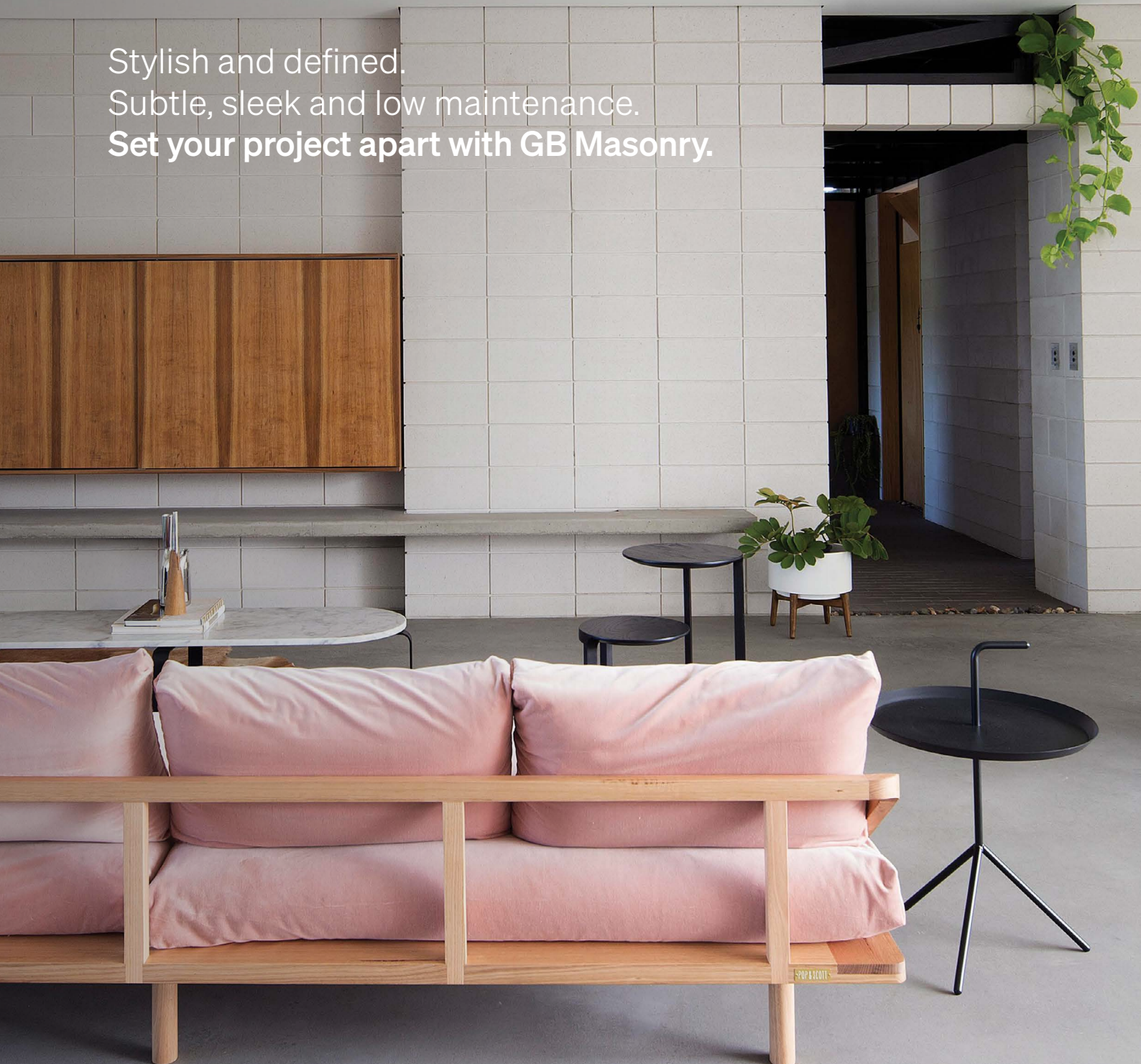
DOWNLOAD REGISTRATION FORM HERE

Further Information

Master Builders Association of NSW Safety Department
(02) 8586 3523
safety@mbansw.asn.au

Create a Statement

Stylish and defined.
Subtle, sleek and low maintenance.
Set your project apart with GB Masonry.



LEARN MORE AT

gbmasonry.com.au

A BRAND OF

BRICKWORKS



BECOME A GATEKEEPER

Suicide Prevention Gatekeepers Training

Master Builders Association of NSW will be facilitating a series of Suicide Prevention Gatekeepers Training Workshops for MBA members and their employees (including building trade apprentices).

safeTALK (aka Connector Training) is an evidence-based course delivered in partnership with Mates in Construction.

The program is funded by the NSW Ministry of Health and will be delivered for FREE. Below are the safeTALK course dates and registration forms for April, May and June 2022 to be conducted at MBA Offices Forest Lodge.

People who are unwell with cold/flu symptoms, or have not received both doses of an approved COVID-19 vaccine may not attend.

For further information on the safeTALK workshops, please contact Omesh Jethwani:

ojethwani@mbansw.asn.au or 02 8586 3539.



DOWNLOAD
THURSDAY 19.05.2022
REGISTRATION FORM

DOWNLOAD
TUESDAY 28.06.2022
REGISTRATION FORM

Prospective attendees are advised that due to the nature of the course content, attendance at the course may be emotionally difficult and confronting, and for some people may trigger an adverse response. MEND takes utmost care to ensure participants are cared for during attendance at the course, but takes no responsibility for any acts of self-harm occurring as a result of attendance.



Hazardous workplace *dust* can be a hidden killer



Microscopic silica and asbestos dust particles settle deep in the lungs, causing serious illness and death.

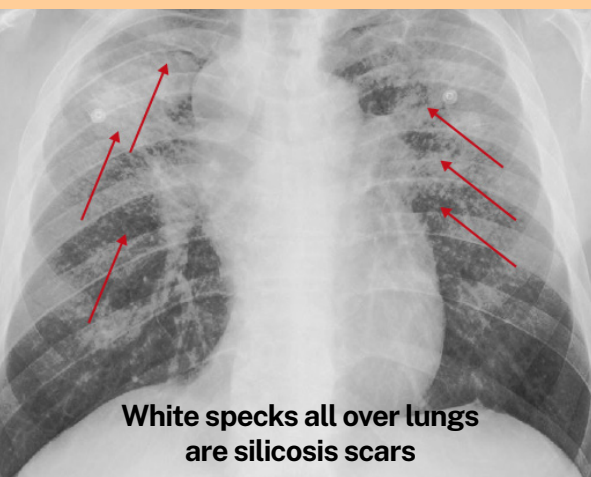
6 people are diagnosed with a dust disease every week in NSW from breathing in dust at work, where adequate controls were not in place.*



Exposure to harmful dust is preventable.

All dust exposure risks must be controlled:

- ✓ Identify the dust hazard
- ✓ Plan the work
- ✓ Eliminate or reduce dust by using the right equipment
- ✓ Use suitable masks and protective clothing (PPE)
- ✓ Clean up safely and dispose of materials responsibly
- ✓ Have regular lung screening for silica and asbestos damage



White specks all over lungs are silicosis scars

Use the right safety controls for each dust

Safety control	Asbestos	Silica	Wood & other dusts
Substitute materials	✓	✓	✓
Ventilate work area	✗	✓	✓
Negative air pressure (friable asbestos removal)	✓	✗	✗
Wet cut	✗	✓	✗
Dust capture	✓	✓	✓
Masks and PPE	✓	✓	✓
Vacuum class M	✗	✓	✓
Vacuum class H	✓	✓	✓
Wet clean-up	✓	✓	✓
Licenced contractors	✓	✗	✗
Train workers	✓	✓	✓
Air monitoring (mandatory for friable asbestos removal)	✓	✓	✓

* Includes asbestos, silica and other dusts. In the 2020/2021 financial year, 333 people were diagnosed with a dust disease due to exposure in a NSW workplace (including new cases and deaths). Of these, 295 (89%) were due to asbestos.

Visit www.safework.nsw.gov.au or call **13 10 50** for more information

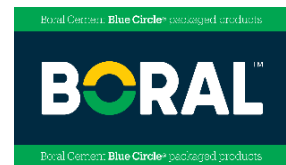


Proudly Supported by:

PLATINUM SPONSORS



GOLD SPONSORS



SILVER SPONSORS



MASONRYCONTRACTORS.COM.AU



PRODUCT NEWS

Boral Packaged Cement

Boral Cement offers a range of products in a packaged form through our trusted reseller network, including cements, dry mixes, specialty sands and gravels, and ancillary products. For the brick and block laying trades in particular Boral Cement's Blue Circle® range of cements for making mortars include Blue Circle® Builders Cement, General Purpose Cement and Off White Cement, all available in 20kg multiwalled paper sacks. Their cements are also used in a wide range of applications including mortars, renders, grouts, screeds and concreting applications. Boral Cement is a true 'local' manufacturer located in the Southern Highlands of NSW and Blue Circle® is a highly regarded product brand trusted by the trades for quality & consistency. So, Build Something Great™ with Boral Cement today!

For more information visit www.boral.com.au/cement



GB Veneer Arcadia: Masonry Inspired by Nature

Inspired by the rich and multifaceted Australian landscape, the GB Veneer Arcadia range captures the spirit and style of the country in all of its varied beauty.

Designed to emulate the natural gradients and delicate colour variations found in Australia's elemental makeup, the mottled colours and subtle earthy texture of the Arcadia concrete blocks are a true testament to GB Masonry's commitment to contemporary Australian design.

To learn more, visit www.gbasonry.com.au



Slurrytub

A portable filtering system that provides a simple and cost-effective environmental solution for the disposal of wet trade slurry. Product Features:

1. Single use biodegradable filter
2. Corner 'cleats' to hold the filter in place.
3. Drain plugs in threaded holes, suitable for standard 20mm tap and hose fittings.
4. Front 'cutout' supports most wheelbarrows, handsfree.
5. Heavy-duty recyclable polypropylene tub, designed to drain quickly.

David Flintoff | CEO Slurrytub | 49 Lathams Road, Carrum Downs VIC 3201
0421 618 080 | david@slurrytub.com | www.slurrytub.com

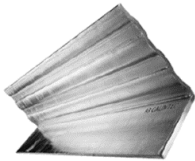


LINTEL RANGE



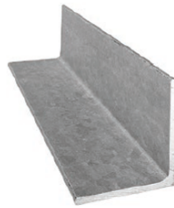
Solid Base Angle

100x100x6mm
150x100x6mm



Traditional Angle

150x100x10mm



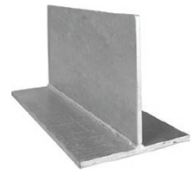
Traditional Flat Bar

85x7mm



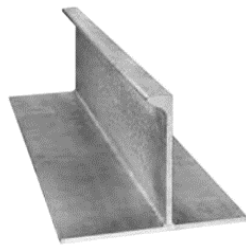
Traditional T Bar

200x200 6mm, 8mm, 10mm
250x200 12mm



Cavi T Bar *

180
240



J Bar *

260
310



Concrete Standard Lintel

80x110mm



Concrete Roof Bearer Lintel

170x110mm

Don't settle for substitutes. Choose Australian made GALINTEL and ULTRALINTEL products.
Available in stock sizes from our Annangrove NSW Warehouse

Complete Lintels Building Supplies warehouses large volumes of stock lengths available for pickup or next day delivery in the following ranges: Solid Base Angle, Traditional Angle, Traditional Flat Bar, Traditional T Bar, Concrete Standard Lintel & Concrete Roof Bearer Lintel.

* Cavi TBar & J Bar is available for order.

For more information on all Galintel and Ultralintel products visit
www.completelbs.com.au or call (02) 9672 4840

JOIN NOW BECOME A MEMBER

The MCA Premium Program exists to help change the Masonry Industry, for the better. By following our motto, “Masonry Pride, Australia Wide”, the MCA Committee, and all its partners, are striving to achieve the same common goal – to bring masonry back to the forefront of the Australian Construction Industry.

By becoming a partner, you open up a whole world of opportunity for both yourself as an individual and your residential or commercial level company.

HERE'S WHY YOU SHOULD BECOME A MEMBER

- ✓ You'll get access to a large online database packed full of WHS information, SDS's, and other information relevant to your time as either an employee of the Masonry trade or the operator of a Masonry company.
- ✓ You'll get access to a jobs board to put your own talent up for hire (for individuals) and scout for the best talent available (for contractors).
- ✓ You'll be advertised on our brand new “Partners” page if you're a contractor, which we've created to become the ‘Yellow Pages’ of the Masonry Industry.
- ✓ You'll be able to attend our regular meetings and network with top people within the Industry.
- ✓ Lastly, you'll be a part of a bold movement – we want to bring Masonry back to the forefront of the Construction Industry, and we want to help you achieve your business goals.

INDIVIDUAL MEMBERSHIP	SILVER PARTNERSHIP	GOLD PARTNERSHIP	PLATINUM PARTNERSHIP
\$99 YEARLY	\$300 YEARLY	\$500 YEARLY	\$800 YEARLY

JOIN NOW

Email tvanbreugel@mbansw.asn.au | Phone 02 9296 6661