

THE BRICKLAYER

magazine 

www.masonrycontractors.com.au

Official Publication of the Masonry Contractors Australia

VOLUME 4 | APRIL 2023



In this issue...

Annual Awards & Dinner 2023 11

Become a Member 23

Product Spotlight 24

SUPPORT OUR INDUSTRY

SAFE • SOLID • DURABLE
FIRE RESISTANT
LIFETIME GUARANTEE
MINIMAL MAINTENANCE

For Membership details please call
Masonry Contractors Australia
on **02 9296 6661**

PLATINUM SPONSORS

 **australbricks®**

 **Brick & Block
Careers**
EST. 2005

 **australmasonry®**

GOLD SPONSORS

 **BAINES
MASONRY**
Quality First

 **complete
intels**
BUILDING SUPPLIES

 **Leviat**
A CRH COMPANY

 **CEMENT
AUSTRALIA**

 **adbri MASONRY**
an ADBRI company

 **PGH BRICKS &
PAVERS**

MASONRYCONTRACTORS.COM.AU





CONTENTS



PAGE
17

MASONRY CONTRACTORS AUSTRALIA

- President's Report.....4
- Board Members.....6
- June Breakfast Meeting.....8
- September Breakfast Meeting.....10
- Annual Awards Dinner.....11

INDUSTRY NEWS

- Case Study: The Bond - Baines Masonry Blocks.....13
- Supporting & Hiring Apprentices - Brick and Block Careers.....15
- PGH Award Winning Design.....17

HEALTH AND SAFETY

- Asbestos Awareness Breifing.....18
- Important Information on Crystalline Silica.....19

JOIN NOW
BECOME A MEMBER
 SUPPORT OUT INDUSTRY

PAGE
23



PAGE
13

PRODUCT NEWS

- Leviat/Ancon WP4 Windposts.....24
- MET Masonry Products.....25



PAGE
15



PRESIDENTS REPORT

APRIL 2023



After two years of pandemic-induced interruptions, 2022 became a more stable and successful year for the Construction Industry.

On balance, Australian business leaders and

employers head into 2023 with a degree of cautious optimism. They expect business conditions and performance to improve on the back of the strong results of 2022.

But what does the future hold for Australia's Construction Industry?

It is worth noting that the Australian Construction Industry generates nearly \$360 billion in revenue equating to 9% of the country's GDP and has a projected annual growth rate of 2.4%. As of November 2021, the Construction Industry employed an estimated 1,143,600 people. Unsurprisingly, New South Wales has the largest construction workforce (approx 400,000) followed by Victoria (approx 302,000) with Queensland ranked third (approx 233,600). Employment in the Construction Industry grew by 15,600 (or 1.2%) over the last quarter of 2022 and by 136,200 (or 11.8%) over the 2022 year.

It is a testament to the resilience, flexibility and innovation of the Building Industry that we successfully navigated the challenges of post-COVID recovery in 2022.

Demand has been high for the past few years whilst supply has been low, so unemployment levels from construction will not necessarily have a big impact on the economy, but whilst there is less supply of jobs, employment is expected to increase in 2023 despite rising costs and interest rates.

Availability of materials and labour is expected to improve and experts say a backlog of approvals from the HomeBuilder grant means demand is likely to remain high. Will building a home become any cheaper? The cost of materials is not expected to return to pre-pandemic levels, although price increases are slowing.

Whilst the industry does retain a positive outlook for 2023, businesses will need to recognise the necessity in developing strategies to adjust to the challenges expected in the coming year, in particular having to contend with a new set of 'supply-side' challenges. Business leaders in all sectors are reporting declining margins due to these supply-side pressures.

On the home front rampant inflation, chronic labour shortages and supply chain disruptions are all weighing heavily on performance, affecting on time completion of projects and profitability, and we have as a result seen the collapse of some major construction companies from all around the country which will inevitably lead to reform and greater regulation.

Internationally we are sitting on the sidelines watching various scenarios play out. The consequences of the long and tragic Russia Ukraine conflict are still to be realised, China still flexing its muscles continues to make noise and as I write, news has hit the headlines of the Silicon Valley Bank collapse which prompts me to quote that old saying, the US sneezes and the rest of us catch cold. In this case however some traders are entertaining the thought it may very well lead to a possible cash rate cut here later in the year.

Construction and Bricklaying companies have well been put to the test over the past few years however can and must expect more changes. Industry disruption is expected to come more from further regulation and skills shortages rather than from new industry entrants.

An interesting article recently appearing in CEO Magazine quoted "Three out of 10 CEOs in Australia believe their company won't exist 10 years from now if they continue on the same path". The Construction Industry is not in isolation, we too need to evolve and grow in this ever changing environment. We need to lead our companies through continuous transformation over the next 10 years, which could well be more change than we've seen in the past 100 years.



Arguably some of the most important challenges to define our priorities in 2023 will be:

The need for trained brick and block layers is more essential than ever.

Historically tight labour markets have exacerbated chronic staff shortages, particularly for skilled roles. Although a third of construction workers employed are in lower skilled jobs that do not require post school qualifications, those seeking apprenticeships or a traineeship can complete their training through vocational training organisations such as TAFE and the Brick and Block Careers (formerly known as the ABBTF) who continue to invest in training and short courses to grow apprentice bricklayer numbers in the industry.

They report that numbers of their first-year apprentices doubled from 357 at the beginning of COVID in early 2020, to over 700 first-year apprentices this year. It will take a few years, but these good intake numbers will filter through to trade completions. The Brick and Block Careers operational team has been active in building rapport in all areas of education and with employment agencies which has led to a massive increase in referrals from career teachers and career professionals, especially those teachers who would not normally think of brick and block laying as a career of choice.

Investment in process improvements and technology to manage the effects of cost pressures.

Continuing inflationary pressures have diminished business margins and eroded profitability therefore requiring greater thought and research into where best to invest to save.

The cultivation of new suppliers and the adjustment of product offerings.

Supply chain disruptions which continue to persist may require us to review standard practises to drive and seek out alternatives and lead us to collaborate to find new sources of value and tackle shared issues.

In such times of instability, whilst there may be many challenges, many obstacles and many unknowns, it does pay to remember and appreciate that historically Australia has by and large fared well through a number of global and financial upheavals and has managed to ride out the negative effects of many an international concern.

Thank you.

Brendan Coyle MCA President

Masonry Contractors Australia (MCA) and its Members continue to be a fundamental part of the Construction Industry. Our Team of 7 Executives have over 200 years' experience collectively in the Industry. Our team is always willing to impart their knowledge to our Members and industry.

Laura and Tracey have been a pivotal part of the team. We have an ongoing goal to support and contribute to innovative solutions to advance the Bricklaying and Blocklaying Industries for our Members whether they be a Sole Trader or a Tier 1 or 2 Contractor. We cannot thank all of our Members and Sponsors enough for their continued support with which the MCA Team will continue to endeavour to surpass the potential of our Members.



BRICKS • BLOCKS • LINTELS • CONCRETE
GREY BLOCKS • COLOURED BLOCKS • PAVERS
RETAINING WALLS • STONE CLADDING
STEEL REINFORCING • BRICK LAYERS TOOLS



SYDNEY SHOWROOM

40 Eddie Rd Minchinbury, NSW 2770
Ph: 9832 4644
E: sales@mdbrick.com.au

MD BRICK (NSW) PTY LTD

PH: 1300 884 363
www.mdbrick.com.au

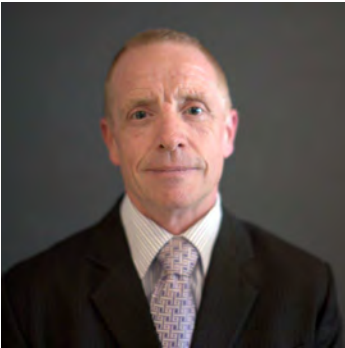
CENTRAL COAST SHOWROOM

9 Dyer cres West Gosford, NSW 2259
Ph: 4352 7000
E: sales@mdbrick.com.au



BOARD MEMBERS & EXECUTIVE STAFF OF MASONRY CONTRACTORS AUSTRALIA

Masonry Contractors Australia (MCA) is a voluntary run/operated Association by Company Directors (of their private companies) to assist Bricklayers/Contractors and the Masonry Industry.



BRENDAN COYLE PRESIDENT

Construction Manager - Walsos Bricklaying (NSW) Pty Ltd

Brendan has more than 30 years experience in the Masonry Industry. He has worked as a bricklayer in Ireland, England, New Zealand and across Australia. With more than 20 years' Senior Management experience, being employed by two Australian major brick manufacturers for approximately 15 years. Brendan also has Masters in Business (MBA).



TIM MURPHY EXECUTIVE MEMBER

Director – Fugen Holdings NSW Pty Ltd

Tim and his brother Dan established Fugen (Bricklaying) in 1984, which Tim and Dan still operate today. Tim was a founding member of the MCA, under the leadership of 'Jock' Cameron (and John White). Tim is proud to still be involved with the MCA and the Masonry Industry.



CON ZARAFETAS EXECUTIVE MEMBER

Executive Director – Conrina Masonry Pty Ltd

Con Zarafetas, founder of the Conrina Group, has been involved in the Masonry Industry for more than 30 years. His love for the industry manifests in his commitment in promoting the positive aspects that masonry delivers, through his involvement with the MCA. Con, an experienced Director, demonstrates an ability to grow organisations to be both financially and ethically sustainable, rewarding all stakeholders in the process. Con has a Graduate Diploma of Management from Macquarie University and is currently completing his Master of Business (MBA) at MGSM.



■ JOHN WHITE EXECUTIVE MEMBER

Senior Commercial Business Development Manager
PGH Bricks & Pavers NSW

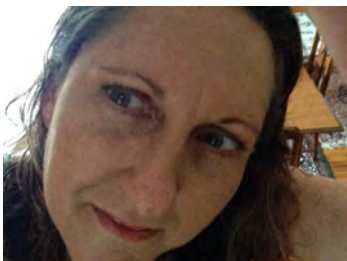
John has been around the MCA activities since 1997. He served as Executive Officer from 2003 to 2013. Primarily from a Sales background, John has sold everything relating to the industry, including bricks, blocks, sand and cement, through to wall ties as well as bricklaying services. He has a basic knowledge of remedial and rectification work. Companies he has worked for are Aalborg, ABBTF, Austral, Boral, Brick & Block, Melcann, Statewide and Westox. John's motivation for his work with the Association is to contribute to the continuance of a trade which has fed and clothed him for 30+ years.



■ SAM FAVETTI EXECUTIVE MEMBER

Operations Manager / Supervisor – Favetti Bricklaying Pty Ltd

Sam Favetti is a bricklayer with over 40 years of experience. He is also a business owner as the Director and Operator of the Favetti Group of Companies involved in Commercial and Residential Construction, and some of Sydney's Iconic Brick Buildings. Bricklaying is his daily passion and keeping the trade strong is his commitment to the industry. An MCA Member who wants to contribute his experience for the betterment of the trade. Sam has a Cert IV in Building and an Associate Diploma in Construction Management.



■ TRACEY VAN BREUGEL EXECUTIVE SECRETARY

Master Builders Association of NSW &
Secretariat to Masonry Contractors Australia

Tracey has been employed by the Master Builders Association of NSW (MBA NSW) for seven years working Tuesdays – Fridays 8:30am – 5:00pm. She administrates for three Industry Sectors: Masonry Contractors Australia (MCA), Metal Roofing and Cladding Association of Australia (MRCAA) and Livable Housing Australia (LHA).





28 JUNE 2023



BREAKFAST MEETING

7:30am - 9:30am

Registration from 7:15am

\$50
+GST

Set Up - 7:00am

Breakfast served - 7:30am

Welcome Address by President - 8:00am

Guest Speaker - Brian Seidler

Q & A Opportunity w/MBA NSW Executive Director

Meeting concludes - 9:30am

Novotel Sydney Olympic Park
Forest Room

Please advise your attendance by completing the [Registration Form](#) and returning by email to tvanbreugel@mbansw.asn.au no later than **Wednesday 21 June 2023**.

POTENTIAL NEW MEMBERS ARE INVITED

TRADIES CHOOSE

THE CEMENT MADE RIGHT HERE

- ✓ Proudly manufactured right here in Australia since 1890
- ✓ Conforms to Australian Standards (AS3972)
- ✓ Tested for Australian conditions
- ✓ High quality ingredients ensure consistent performance



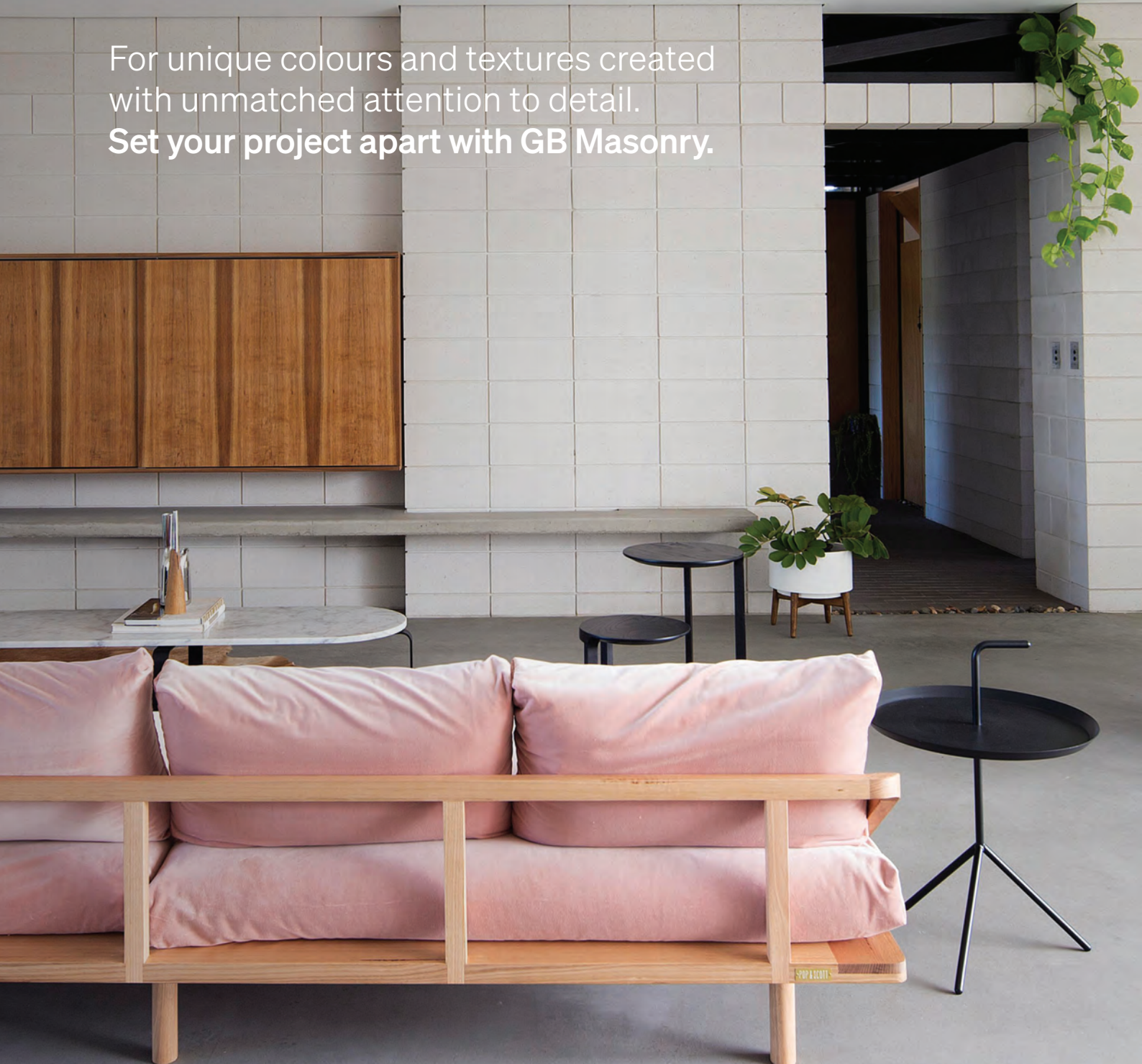
Quality ISO 9001



GB Masonry

Crafted & refined to perfection

For unique colours and textures created
with unmatched attention to detail.
Set your project apart with GB Masonry.



LEARN MORE AT

gbmasonry.com.au

A BRAND OF

BRICKWORKS



13 SEPTEMBER 2023

BREAKFAST MEETING

7:30am - 9:30am

Registration from 7:15am

Set Up - 7:00am

Breakfast served - 7:30am

Welcome Address by President - 8:00am

Guest Speaker - TBA

Guest Speaker - TBA

Meeting concludes - 9:30am

\$50
+GST

Novotel Sydney Olympic Park
Forest Room



Please advise your attendance by completing the [Registration Form](#) and returning by email to tvandbreugel@mbansw.asn.au no later than **Wednesday 6 September 2023**.

POTENTIAL NEW MEMBERS ARE INVITED

Colour-through Concrete Face Bricks

Adbri Masonry's Australian made concrete bricks offer a superior solution for your next construction project. Engineered to meet the highest industry standards, our bricks offer six colour-through options and three surface finishes for added versatility. With uniform dimensions matching traditional bricks and a three-core design, installation is seamless and worry-free.

Our bricks are equally suitable for residential, multi-residential, and commercial construction, and meet exposure-grade requirements for external walls. Produced in accordance with the rigorous AS4455.1 standard, our bricks boast a comprehensive strength suitable for loadbearing in commercial and residential applications and includes fire rated properties for strength, insulation and integrity. Trust in Adbri Masonry's concrete bricks for practical, durable solutions that stand the test of time.

AdbriMasonryAus adbrimasonry

1300 230 633 | adbrimasonry.com.au | enquiries@adbri.com.au

adbriMASONRY

an ADBRI company



AUSTRALIAN MADE
MASONRY **QUALITY**
CONCRETE PRODUCTS
BUILT TO LAST.



SAVE THE DATE
**ANNUAL
AWARDS &
DINNER 2023**

FRIDAY 10 NOVEMBER 2023
6:30PM

DOCKSIDE – COCKLE BAY ROOM & QUAY
ROOM 2 – DARLING PARK

FURTHER DETAILS TO FOLLOW



Come home to Austral Bricks

Enduring style. Energy saving efficiency.
Everlasting strength in all conditions. It's easy
to see why brick outlasts all other materials.
Life is better with **Austral Bricks**.



UNBEATABLE WARRANTY

100 YEAR | PRODUCT WARRANTY

LEARN MORE AT

australbricks.com.au

A BRAND OF

BRICKWORKS



PROJECT CASE STUDY: THE BOND

Baines Masonry BETTA BLOCK™ delivers a sustainable advantage to a next generation workplace!



Stunning with Tough Engineering

The Bond is a mixed-use infrastructure designed primarily for leading wellness facilities and commercial workspaces, located in the Norwest business park. It is one of three developments which will provide support for the adjacent Norwest Private Hospital.

Features of the project include:

- Levels 1 and 2 provisioned for Class 9A medical tenancies.
- Two oncology bunkers on basement level B2.
- Level 1 childcare facility for 110 places.
- Ground floor retail environment.
- Six floors of commercial office buildings.
- Three level basement car parks with 319 spaces.
- End of trip facilities including showers, changerooms and bicycle storage.
- Short term visitor parking, and service vehicle and loading facilities.

The Bond is an innovative and sustainable commercial building with its designs focused on the future and the ideal workplace. In doing so, it is aesthetically beautiful incorporating the natural surrounding elements supported by state of the art engineering.

Overall, the seven-storey building is constructed from engineered cross-laminated timber (CLT) for the 1,600m² floorplates, walls, and stairs, as well as glulam and traditional laminated timber for columns and beams for frames. The modern finish is executed by complete cladding in high performance full height glass façade.

The timber formation with a mass of 13,000m³ was built on a sturdy foundation made up of 17,000m³ of concrete. The structural podium was built using approximately 4,500 Baines Masonry BETTA BLOCKS™ laid by Walsos Bricklaying. In addition, the decorative retaining wall approaches to the entrance were created with approximately 9,500 Split Face masonry blocks in Basalt colour.

Nature and Innovation

The Bond is a modern and innovative building representing the future in office design. The uniquely conceived structure incorporates modern technologies, remarkable architecture, cohesively embracing the natural environment. Materials used in construction all bear relevance in local history whilst creating a contemporary appeal.



The use of Baines Masonry Split Face blocks in Basalt colour offers a natural texture within a sleek and sharp aesthetic. Bringing the outside in creates a contrast however maintains a balance with choice of colour with Basalt. The darker colour complements a modern aesthetic, while also drawing out other surrounding materials such as timber and concrete.

The Baines Masonry Split Face block gives an attractive natural stone-like finish, while being extremely durable. The face splitting process reveals the aggregates used in the block with no two split face block units being exactly alike. The range is manufactured with a water repellent admixture to ensure long term colour quality and durability, with colours available based on the natural tones and detail of the Australian landscape.



Our Split Face block system is versatile, ideal for internal or external constructions and for both load bearing and non-load bearing walls. With a variety of sizes available (90mm-290mm wide blocks) are also available with cut-outs for horizontal reinforcement rods. These blocks can be reinforced and core filled on-site to engineer's specifications.



Lifestyle and Sustainability

On top of its unique and artistically appealing design, The Bond is designed to be sustainable, now and into the future. The use of new timber technologies offers increased strength and effectiveness, along with the capacity to be carbon-neutral over their lifecycles. Likewise, Baines Masonry's BETTA BLOCK™ offer sustainable properties and an advantage to those seeking more sustainable material options

The BETTA BLOCK™ provides its first environmental advantage through its material composition which is primarily recycled. The material, a combination of concrete and aggregates, creates a low maintenance product which starts stronger and lasts longer. This not only reduces the environmental impact of producing more material, but also provides more financial value as replacement products are not needed.

BETTA BLOCK™ can also reduce the energy consumption of residents of a building, as the structure is able to sustain its temperatures for longer, providing insulation during the cooler and warmer months. The consistent temperatures can lower energy costs by moving peak loads to non-peak hours due to the longer hours of sustained temperature, while ensuring the comfort of those inside.

Due to the ease of movement of masonry blocks and their size, the construction requirements for masonry blocks are kept low. Without the need for large equipment the impact on the environment is lower than other products on the market.

Not only are our masonry blocks sustainable, but how we produce and manufacture them has been designed with sustainability as a key factor. Our production facility at Appin, south of Sydney, has been configured to lower embodied energy, reduce greenhouse gases, increase recycling, eliminate water pollution, and preserve local fauna and flora.

Summary/Conclusion

The Bond at Norwest is a state-of-the-art commercial building which took a considerable team to design, plan, and construct. The innovation in concepts and material technologies enables the building to provide value now and in the future. Baines Masonry Blocks delivered sustainable and durable masonry blocks which complement the contemporary aesthetic which was a balance between natures, architecture, and technologies.



Project Profile

- Builder:** Buildcorp
- Block Layer:** Walsos Bricklaying
- Client:** Mulpha Norwest
- Architect:** Fitzpatrick & Partners
- Location:** Norwest, NSW
- Value:** \$55m
- Completion:** March 2023
- Sector:** Commercial/Industrial, Retail
- Materials:** Timber, Structural Blocks, Architectural Blocks, Civil and Façade

Baines Masonry Supplied:

- 200 Series BETTA BLOCKS™
- 300 Series BETTA BLOCKS™
- 200 Series Split Face Basalt Blocks
- 300 Series Split Face Basalt Blocks

For more information on our product range visit our website at www.bainesmasonry.com.au, or call our team on 02 4631 1383.



Supporting and Hiring Apprentices is an investment in the future of the Construction Industry



Your Business Success – Taking on An Apprentice

In the Construction Industry, apprenticeships are particularly important as they allow individuals to gain hands-on experience and knowledge from seasoned professionals. This is especially true in the field of bricklaying, where the guidance and expertise of experienced bricklayers can make all the difference in producing quality work.

It is recommended that one apprentice be employed for every eight bricklayers, ensuring that there is a sufficient number of trainees to meet the growing demand for skilled workers in the industry. By investing in apprenticeships, employers not only help to address the skills gap they also provide a pathway for individuals to develop rewarding careers in the trades.

Builders who support and hire apprentices are investing in the future sustainability of their trades. By providing opportunities for apprentices to learn and grow, builders are ensuring that the skills and knowledge necessary for their trade are passed down to the next generation. This not only benefits the apprentices themselves by providing them with valuable experience and training, it also helps to ensure that the industry remains strong and capable of meeting future demand.

Additionally, supporting and hiring apprentices can help to promote a more diverse and inclusive workforce, which can bring new perspectives and ideas to the table. Investing in apprenticeships is an investment in the future of the industry and the broader community, and it is a vital step towards ensuring a sustainable future for all.



Are you thinking about hiring an apprentice?

Brick and Block Careers can connect apprentices with employers looking to hire an apprentice.

Contact us on **1300 66 44 96** or visit **brickandblockcareers.org.au**



Overall, brick and block-laying apprenticeships are essential to the Construction and Building Industry's ability to expand and succeed. According to our guideline, there should be at least one apprentice for every eight brick and block-layers. The ideal ratio is one apprentice for every four brick and block-layers – Brick and Block Careers.



1:8 - RECOMMENDED

One apprentice to eight brick & block-layers is recommended.



1:4 - IDEAL

One apprentice to four brick & block-layers is ideal.

An apprentice is an investment in your business.

Hiring a brick and blocklaying apprentice makes good business sense. The cost of employing an apprentice is less than it would be to take on another employee. Hiring an apprentice gives you access to several subsidies and incentives.

We are here to help and support the industry. Brick and Block Careers offers Brickstart Subsidy of up to \$1,000 per apprentice, per year to eligible Employers.

Choose Complete Lintels Building Supplies

Complete Lintels Building Supplies is Sydney's trusted distributor of Galintels, Concrete Lintels, Bricks, AFS Rediwall, Hebel, Concrete Blocks, Retaining Wall Blocks, Premix Concrete, Armourdeck, Structural Steel, Mesh & Accessories, Landscaping Solutions & Brick Accessories. Complete Lintels Building Supplies is proudly & strongly associated with reputable manufacturers of Australian made building products. This means we can confidently supply you with the right building product to build your dream.



Open

Mon-Fri 8am to 5pm

2/233 Annangrove Rd

Annangrove NSW 2156

t: (02) 9672 4840

e: sales@completelbs.com.au

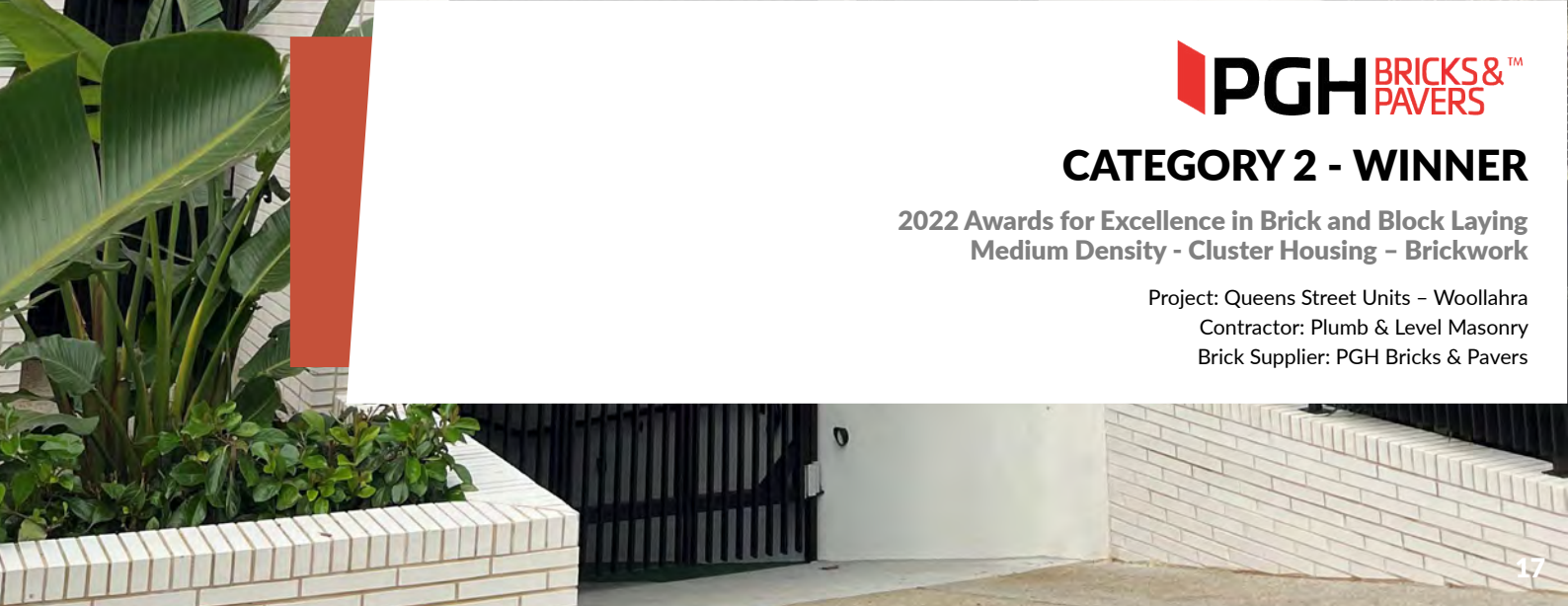




CATEGORY 2 - WINNER

2022 Awards for Excellence in Brick and Block Laying
Medium Density - Cluster Housing - Brickwork

Project: Queens Street Units - Woollahra
Contractor: Plumb & Level Masonry
Brick Supplier: PGH Bricks & Pavers





ASBESTOS AWARENESS BRIEFING



DANGER ASBESTOS



BACKGROUND

Uncontrolled cutting, grinding or drilling of products or materials containing crystalline silica can generate hazardous levels of airborne dust. Breathing in this dust, usually over several years, leads to serious and fatal lung disease such as silicosis.

COURSE AIMS

Silicosis can kill, but exposure to silica dust is preventable. SafeWork NSW is spreading this message by educating workers and the public about the risks of exposure.

COURSE TOPICS

- Eliminate or Substitute the Risk
- Isolate the Hazard
- Engineering Controls
- Administrative Controls
- Respiratory Protective Equipment (RPE)

WHO SHOULD ATTEND

Anyone who works with manufactured stone, concrete, bricks or rock.

COURSE LOCATION

MBA Office - 52 Parramatta Road, Forest Lodge 2037
Parking is not available at MBA Office for the duration of the course.

DATE AND TIMES

Please indicate your preference on the Registration Form provided.

COURSE COST

Masonry Contractors Australia (MCA) Company Rate:

Up to 10 employees - **\$500 +GST**

Up to 15 employees - **\$750 +GST**

Up to 20 employees - **\$1,000 +GST**

REGISTRATION DETAILS

To register your attendance for this course please complete the form in the link below and email it back to the MBA Safety Department using the details at the bottom of the form.

Please note that a confirmation email will be sent to you with full details.

COVID-19

Attendees who are unwell with cold/flu symptoms or have not received both doses of an approved COVID-19 vaccine may not attend. Attendees must show a current COVID-19 vaccination certificate when requested.

**Download Registration
form below** ↓ ↓ ↓ ↓

CLICK HERE

FURTHER INFORMATION

Master Builders Safety Department
(02) 8586 3523
safety@mbansw.asn.au



IMPORTANT INFORMATION CRYSTALLINE SILICA

Members would be aware that the issue of the dangers of silica have been recently highlighted in the media. The Association has been advising members for some time about the recommended control of silica and what the regulators also say.

Members are advised of the following information in relation to working with crystalline silica and products that contain crystalline silica.

SOURCES OF EXPOSURE

Materials and products containing crystalline silica include shale, sandstone, concrete, bricks and manufactured stone. Workers can come in contact with crystalline silica during excavation or tunnelling, through rock containing quartz such as shale or sandstone. A health hazard is created when the very fine particles of crystalline silica can be inhaled. The size fraction of airborne dust that can reach the lungs where air exchange takes place is known as the 'respirable fraction'.

Significant levels of airborne dust are most likely to occur when materials or products in the workplace are cut, sanded, drilled, or during any other activities which create fine dust. Exposures in workplaces can also occur through dry sweeping or using compressed air (rather than wet cleaning or using a Class M or H vacuum) and re-suspension of settled dust from clothing or fabric materials.

LABELLING AND SAFETY DATA SHEETS

Manufacturers and importers need to label their products if they contain 0.1% or more respirable crystalline and provide a current Safety Data Sheet (SDS) (**clauses 329, 330 and 335 WHS Regulation 2017**). Suppliers must ensure these products are correctly labelled when supplied to workplaces and provide an SDS (**clauses 338 and 339**).

A person conducting a business or undertaking (PCBU) must also obtain a copy of the SDS and make it readily accessible to workers involved in using, handling or storing hazardous materials at the workplace (**cl 344**).

HEALTH MONITORING

PCBU's are required to provide health monitoring to workers if there is a significant risk to the worker's health because of exposure to crystalline silica. (**cl 368**)

Crystalline silica is listed in **Schedule 14 of the WHS Regulation 2017** which outlines the health monitoring requirements.

In relation to health monitoring, PCBU (**clauses 369 to 378**) duties include :

- Informing workers of the requirements for health monitoring.
- Using a registered medical practitioner with experience in health monitoring.
- Providing details to the medical practitioner.
- Obtaining a copy of the health monitoring report.
- Providing a copy of the health monitoring report to SafeWork NSW if the worker has developed a disease or injury and/or the report contains any recommendations on remedial measures at the workplace.
- Keeping records of health monitoring for 30 years.



IMPORTANT INFORMATION CRYSTALLINE SILICA

Workers exposed to respirable crystalline silica at levels or a frequency not resulting in a significant risk to health, are not required to undergo health monitoring. Workers relying on personal protective equipment (PPE) such as respirators for controlling their exposures below the exposure standard must be included in health monitoring.

CONTROL MEASURES

Where risks to health and safety cannot be eliminated, the hierarchy of controls must be applied in accordance with the WHS Regulation to minimise risk.

For instance:

- Apply water suppression systems to reduce dust generation.
- Use local exhaust ventilation systems to remove dust at the source.
- Ensure such ventilation is correctly placed and operates at effective flow rates.
- Use dust removal systems on tools to reduce dust exposure to mobile workers.
- Isolate areas of the workplace where dust is generated.
- Assess the level of personal exposure among workers performing high risk tasks.
- Ensure regular housekeeping in dusty work areas to prevent the accumulation of dust.
- Provide suitable PPE, including a program to correctly fit, instruct on use and ensure regular maintenance of respiratory protective equipment (RPE).

Clause 184 (0) of the WHS Regulation 2017 prohibits the uncontrolled cutting, polishing, grinding or drilling of manufactured stone products (also known as engineered or composite stone) in fabricating workshops or on site. At least one of the following controls to effectively reduce exposure to the dust must be in place:

- i. A water delivery system that supplies a continuous feed of water over the area being cut to suppress the generation of dust,
- ii. A prescribed extraction system (e.g., class M or H vacuum) that is attached to the tool used for the cutting to capture the dust produced by the cutting,
- iii. A local exhaust ventilation system that captures the dust produced by the cutting and transports the dust to a safe emission point or to a filter or scrubber.

Workers must also be **provided with** and **wear** half face piece respirators as a minimum, that comply with Australian Standard 1716 - Respiratory Protective Devices.

PCBU's must provide suitable information, training, instruction and supervision to workers using, storing and handling hazardous chemicals regarding the nature of the work, risks and the control measures implemented (**cl. 39 and 379**).

PCBU's with duties under the **WHS Regulation 2017** must review and revise control measures, as necessary, to maintain a work environment so far as reasonably practicable, that is without risk to health or safety (**cl 38**).

Other examples of control measures that can be applied to reducing the risks associated if you are working with silica or products that contain silica.



IMPORTANT INFORMATION CRYSTALLINE SILICA

ELIMINATE OR SUBSTITUTE THE RISK

Remove the hazard completely, change the design, replace the hazard with products containing less crystalline silica. For example, replace manufactured stone containing high levels of silica with materials containing no silica or much lower levels of silica.

ISOLATE THE HAZARD

Isolate workplace areas where dust is generated from other workers, enclose processes, or isolate the hazard from anyone exposed to it. For example, with barriers.

ENGINEERING CONTROLS

Use local exhaust ventilation systems to remove dust at the source and ensure such ventilation is correctly placed and operates at effective flow rates.

Use dust capture systems on tools to reduce dust exposure of mobile workers.

Ensure regular housekeeping in work areas to prevent the accumulation of dust and use H or M class vacuums for safe clean up.

DRILLING IN CONSTRUCTION

Construction materials such as sandstone, concrete and bricks can contain up to 90% silica dust. When drilling on these materials, you can generate and breathe in fine crystalline silica dust, which can cause serious illnesses such as silicosis and lung cancer. This helpful video provides advice on planning your job and using the correct safety controls to help protect workers and others from silica dust on site.

If you work with a drill or near those who do, [watch this video](#).

DEMOLITION AND EXCAVATION

Fine crystalline silica dust can be generated when carrying out demolition and excavation work, which can be harmful to breathe in, and can lead to serious and sometimes fatal illness. Exposure to silica dust when drilling materials can be minimised by using the right tools and protective equipment.

SILICA DUST - CONTROLLED CUTTING OF BRICKS AND CONCRETE USING ON-TOOL CAPTURE

On-tool dust capture is an effective way to eliminate and reduce exposure to silica dust. This video safety alert highlights how to use on-tool dust capture to ensure the safe cutting of materials such as bricks and concrete.

SILICA DUST - CONTROLLED CUTTING OF BRICKS AND CONCRETE USING WATER

Using water to control dust while cutting materials such as brick or concrete is a very effective way to eliminate and reduce exposure to silica dust. This video safety alert highlights [video here how to use water to control dust](#).



IMPORTANT INFORMATION CRYSTALLINE SILICA

ADMINISTRATIVE CONTROLS

Use safe work procedures, minimise the time workers perform higher exposure tasks, alert workers and visitors to danger, and provide information, training and supervision.

PERSONAL PROTECTIVE EQUIPMENT (PPE)

Provide suitable PPE, including a program to correctly fit, instruct on use and ensure regular maintenance of respiratory protective equipment (RPE).

PERCENTAGE OF SILICA IN COMMON BUILDING PRODUCTS

Type	Amount of Silica %
Granite	25 to 40
Shale	22
Natural Sandstone	67
Engineered Stone	>90
Aggregates, Mortar & Concrete	Various

TRAINING COURSES

Master Builders Safety Department run an Asbestos and Silica Awareness Briefing that gives members information about uncontrolled cutting, grinding or drilling of products or materials containing crystalline silica which can generate hazardous levels of airborne dust. Breathing in this dust, usually over several years, leads to serious and fatal lung disease such as silicosis. Silicosis can kill, but exposure to silica dust is preventable.

If you are interested in registering for the Asbestos and Silica Awareness Briefing contact the Master Builders Safety department on safety@mbansw.asn.au or 02 8586 3555. More information about the briefing can be found at following [link](#).

OTHER RESOURCES

<https://www.safework.nsw.gov.au/hazards-a-z/hazardous-chemical>

<https://www.safework.nsw.gov.au/resource-library/hazardous-chemicals/crystalline-silica/crystalline-silica-general-fact-sheet>

<https://infostore.saiglobal.com/en-au/Standards/AS-NZS-1715-2009-1092559/>

https://www.safework.nsw.gov.au/data/assets/pdf_file/0017/50084/Preparation-of-safety-data-sheets-for-hazardous-chemicals-COP.pdf

<https://www.safeworkaustralia.gov.au/doc/workplace-exposure-standards-airborne-contaminants-2022>

Members with questions are encouraged to contact the Master Builders Safety department on safety@mbansw.asn.au or 02 8586 3555.

JOIN NOW

BECOME A MEMBER

The MCA Premium Program exists to help change the Masonry Industry, for the better. By following our motto, “Masonry Pride, Australia Wide”, the MCA Committee, and all its partners, are striving to achieve the same common goal - to bring masonry back to the forefront of the Australian Construction Industry.

By becoming a partner, you open up a whole world of opportunity for both yourself as an individual and your residential or commercial level company.

HERE’S WHY YOU SHOULD BECOME A MEMBER

- ✓ You’ll get access to a large online database packed full of WHS information, SDS, and other information relevant to your time as either an employee of the Masonry trade or the operator of a masonry company.
- ✓ You’ll get access to a jobs board to put your own talent up for hire (for individuals) and scout for the best talent available (for contractors).
- ✓ You’ll be advertised on our brand new “Partners” page if you’re a contractor, which we’ve created to become the “Yellow Pages” of the Masonry Industry.
- ✓ You’ll be able to attend our regular meetings and network with top people within the Industry.
- ✓ Lastly, you’ll be a part of a bold movement - we want to bring Masonry back to the forefront of the Construction Industry, and we want to help you achieve your business goals.

INDIVIDUAL MEMBERSHIP	SILVER PARTNERSHIP	GOLD PARTNERSHIP	PLATINUM PARTNERSHIP
\$99 YEARLY	\$300 YEARLY	\$500 YEARLY	\$800 YEARLY

JOIN NOW

Email: tvanbreugel@mbansw.asn.au | 02 9296 6661



Ancon WP4 Windposts provide strong support, with modern design.

Sometimes referred to as; 'spine' posts, Ancon WP4 Windposts support lateral load while enabling modern design.

Large panels of masonry or panels with openings can be challenging to design. Traditional solutions have been to increase the thickness of the wall, introduce a masonry pier, or use concrete-filled hollow blocks.

Alternatively, Windposts can provide lateral stability to masonry panels from forces typically originating from wind pressure. They are installed into either the inner leaf of blockwork or inside the cavity leaving the blockwork undisturbed, but what about when there is no alternate support?

As part of a collaboration with Brickworks for their Breeze Block design, Leviat has created a solution using our Ancon WP4 Windposts, that strengthens structural integrity of standalone panels without compromising modern design in

combination with Ancon AMR Steel Reinforcement System. Ancon WP4 Windposts are flat, steel plates designed to be fully embedded vertically within block walls without protruding on either side.

Windposts are fabricated to suit specific job requirements and, where necessary, can be thicker to support higher loads. During every stage of a project, from initial planning to installation and beyond, Leviat's Design Engineers can assist with technical design. Services can range from simple product selection to fully customised design solutions based on specific requirements.

For more information on Ancon WP4 Windposts, please contact:

Jennifer Braybrook
Masonry Division Manager, Leviat in Australia
Ancon.com.au | Leviat.com

Building with blocks?
Count on our support with Windposts

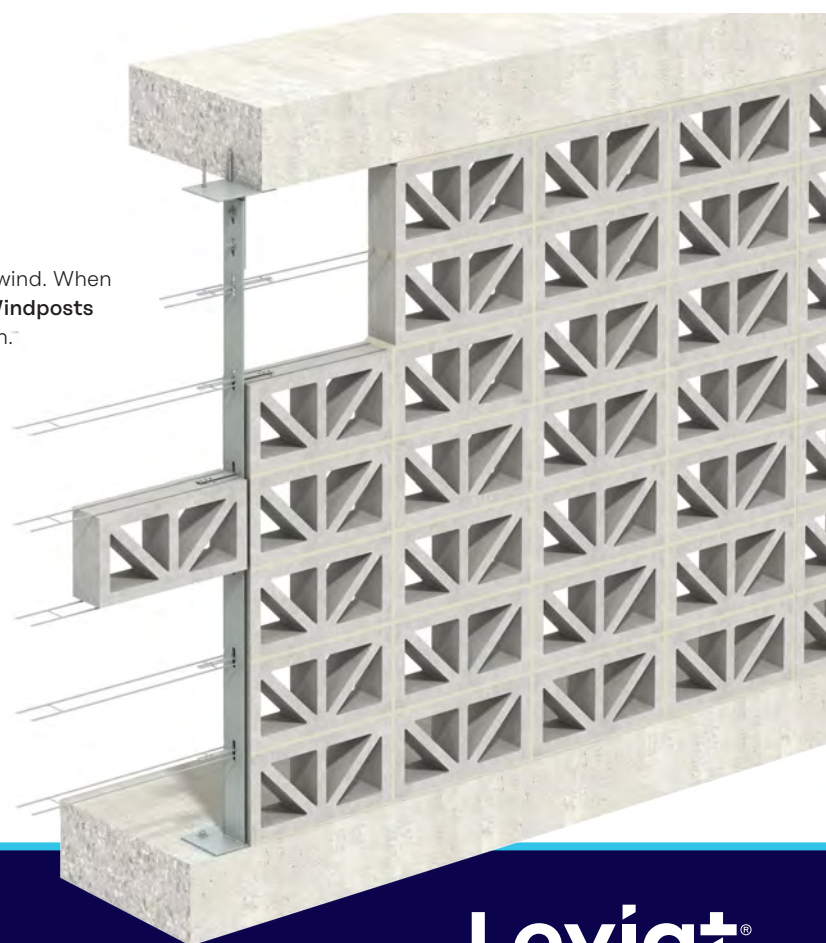
Windposts provide support against lateral load from forces such as wind. When building with slimline walls or single panels with gaps, **Ancon WP4 Windposts** offer maximum stability without compromising contemporary design.

Why choose Ancon WP4 Windposts?

- Invisible installation between blockwork
- Made to specific job requirements
- Post thickness can vary to suit load capacity
- Designed to EN 1993



Ancon
WP4 Windposts



Leviat
Ph: 1300 304 320
masonry.au@leviat.com

Ancon.com.au | Leviat.com

Imagine. Model. Make.



How to avoid the biggest issues facing the Australian Building Industry

With new government compliance pressure, engineers, builders and their bricklayer sub-contractors are in the firing line to prove build quality on medium and high-density projects. MET Masonry Product and Service Supplier CEO, Jason Furness, explains what needs to be done and ways to safeguard your business.

When the Opal Tower disaster first grabbed headlines in 2018, the Building Industry was thrust into the spotlight with a legislative overhaul that has reverberated into a barrage of new compliance demands. The effect is that every stage of any medium and high-density development needs to be checked and double checked with no room to diverge from engineered plans. Build processes have incurred more scrutiny, as much as documenting the materials used at every stage of the build.

Bricklayers protect themselves with performance assured materials.

Bricklayers have more eyes on their job than ever before. Where there used to be more freedom to swap in materials to accommodate costs and efficiencies, bricklayers must now prove their materials comply with the strict rules. **“The workmanship and conformance to standards of brick and blockwork are one of the areas under increasing scrutiny. Pulling down and replacing non-conforming and substandard work is guaranteed to be expensive, time consuming, and the source of commercial friction amongst the project managers and contractors. No one wins by doing the work twice.”** Jason Furness, CEO of Masonry Supplier, MET.

Masonry Product and Service Supplier, MET, have a complete range of commercial grade brick ties for usage in all environments and all wind loadings. MET can provide engineering support to help you select the correct brick tie for your project. It is much better to involve us at the design stage, and certainly before you submit a tender price to avoid the commercial downside of undercooking your quote. This Aussie innovation was developed in response to the Newcastle Earthquake and has earned its leading position as the most trusted brick expansion tie in the Australian medium and high-density market.

By insisting that plans certify MET brick ties, the bricklayer can protect their business from future challenges to their build quality.

MET: THE FULL SUITE OF MASONRY FOR ONE PROJECT of 200+ products, seven product types complete this range:

- Builders Straps
- Cavity Ties
- Vertical Expansion Joint Ties
- Head Restraint Ties
- Column Expansion Ties
- Cavity Expansion Ties
- Roof Hold Down Straps

Builders and bricklayers reap reward with more on-site support.

Supply chain management is ever critical for the builder. Bricklayer sub-contractors need to demonstrate to the builder they are working with suppliers that have delivery scheduling and timing taken care of and detailed support.

Unlike the big hardware stores, MET offer a complimentary support service to back up our full suite of masonry products. Our commercially smart sales support team can come to site to deliver our range. Bricklayers don't have to leave to pick up materials. That face-to-face helps smooth out the build process, with all questions answered easily.

Documentation control is more rigorous for every stage of the build.

The MET difference is the ability to protect against the most common cause of warranty claims in medium and high-density developments.

Engineers, builders and bricklayers now need to be sure they're using those products that can prove capability with all the right paperwork. There is relief when products can meet a strict compliance records regime.

MET Masonry Products and Service is a proud sponsor of Masonry Contractors Australia.

For more information about MET Masonry Products and Service, which operate within the TEXO suite of building materials brands, ask for CEO Jason Furness by mentioning this article. 1300 00TEXO (8396) or email sales@texo.com.au or visit www.met.com.au.



MET: the full suite of Masonry Products and Service

Founded after the Newcastle Earthquake, MET Masonry Products are stronger and trusted for quality. We have the only Australian-made expansion ties, certified for the home to the tallest building.

As we offer the full suite of masonry for the Construction Industry, we make it easier to build more affordably. Our service team delivers on-site, so you don't need to leave. We meet your build scheduling and timing.

We are part of the TEXO stable of building and construction brands.

www.met.com.au | www.texo.net.au

1300 00TEXO (8396)

[email sales@texo.com.au](mailto:sales@texo.com.au).



HELPING BRICKIES GET IT RIGHT FROM THE FIRST QUOTE TO THE FINISHED WALL.

CALL US ON 1300 00 TEXO (8396)

Proudly Supported by:

PLATINUM SPONSORS



GOLD SPONSORS



SILVER SPONSORS



For Sponsorship details please call
Masonry Contractors Australia
on **02 9296 6661**